

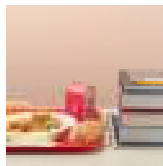


The Catholic Church celebrates the birthday of the Blessed Virgin Mary each year on September 7.

Since we are a “Mary” school, we honor the Blessed Mother on her birthday by collecting food for our local food pantry. The children will present these gifts of food in a short assembly this Friday. We ask that you please send a non-perishable food item for your child to give to Mary by Thursday, 9/6. Donations will go to the local food pantry. Thanks!

Playground Fun: It is permissible (and a good idea) for girls to wear shorts under uniform skirts or jumpers. We encourage our students to climb, run, jump, and slide, so shorts under the uniform make girls more comfortable at recess and in P.E. as well. **The shorts must be completely covered by the skirt or jumper.**

Student lunches are \$2.80 each.
Adult lunches are \$3.50.
Extra milk or milk for lunch brought from home is \$.30.



Don't be tardy!
 It sets a bad tone for your child's day. The only late students that aren't counted tardy are children on the bus. Doors open at 8:05 & school begins at **8:20.**



ST. MARY SCHOOL

FAMILY NOTES

September 4, 2018

Uniform Policy

Please make sure your child is dressed in accordance with the uniform policy:

Shorts, pants, skorts, skirts, & jumpers must be from Old Navy, Luers or Dennis Uniform & the correct style for St. Mary's. Shirts are plain, white polos from any store or a polo with our monogram from Luers. Socks must be plain white, blue or black—no logos. Athletic shoes only. We have piles of used uniforms in the Uniform Store in the main building. Come in!

Before & After Care . . .

Statements for August go out today. Payment is made to St. Mary's School & should be sent to the school office. Mrs. Chance handles the book-work. Contact her with any questions.

Support our Parish

Household items can be left by the 3-car garage for the CD of A garage sale.

St. Mary's Night at Florinda's

On the first Wednesday of most months, Florinda's donates 15% of their profits to our school. You can carry out or dine in. Just tell them it's for St. Mary's and we get the reward!

Remember to check the website!

www.st-maryschool.com

You'll find the student handbook, my newsletters, & more!

School Mass

Thurs., Sept. 6, 9:00 a.m.

4th graders will lead the ministries at this Mass.

Please join us!

Automatic Debit for St. Mary's Church Offerings -

Forms are available to parishioners at the church and school office. You may choose to have your account debited once a week (each Thursday) or once a month (any day of your choosing.) This program is optional, but very beneficial to our church. Families enrolling for the first time can use this as a credit on the parent contract .

Kroger donates 3% of sales to charity. All you have to do is register and St. Mary's gets it! I'll attach the instructions.

You can tell if you are registered because St. Mary School will appear on the bottom of your Kroger receipts.

All School Sing

Sunday, Sept. 9, 11:00 Mass

Several times each school year, we invite our students to come up to the choir loft to lead the singing at a weekend Mass. We call this “All School Sing.” The children sit in the loft with the teachers while parents and parishioners sit down below and enjoy the songs. It adds so much to our Mass when the choir loft of full of signing children! Please join us if you are able. Non-Catholic families are very welcome to take part.

**Please
save Box
Tops for
Education**



Free & Reduced Lunches
Unsure if you qualify?
Contact Mrs. Robertson.
Deadline is Sept. 15

Lunch Info

Parents may pick up their students to take them out for lunch during the student's regular lunch time. Send a note to inform the classroom teacher. Please **DO NOT** bring food from restaurants to the cafeteria. It is against the regulations of the school lunch program. Mrs. Reeter serves good lunches in accordance with state guidelines. Our school lunches or lunches packed from home are the only foods to be consumed in our cafeteria. Please note that soda is not allowed at all.

P.M. Pick Ups

Remind anyone picking up for you that they **must** go through the line to pick up children. We will not allow people to pull students out of line to get into a parked car. The car line is the safest way to dismiss.

St. Mary's Fiesta Sept. 14, 15, and 16

Monsignor has asked that all school families work a shift or donate (a basket of goodies for the raffle, desserts, etc. or a \$50 donation) in some way to the success of the Fiesta. If you haven't already signed up, use form that came home in backpack mail to indicate how you can help.

Thank you to those who have already signed up, sent a basket, or given a monetary donation!

School doors open at 8:05 a.m.

If your child comes to school before that time, he or she must go to the Before Care Program in the cafeteria. Cost is \$1 per day. Children may be dropped off on the blacktop if you see the Before Care supervisors with their students lined up to enter the buildings or if it is after 8:05. Students found outside before 8:05 will be escorted to Before Care, and families will be charged for the day. If you arrive a couple of minutes early, keep your students with you until the doors open. Should you need to visit the office, wait till 8:05 if possible or bring your children with you.

Coming Events...

- *3 Year Old Preschool begins—Sept. 5
- *St. Mary's Night at Florinda's—Sept. 5
- *Children's Mass—Thurs. Sept. 6, 9:00—Gr. 4 leads
- *Blessed Virgin Mary's B'day—Fri., Sept. 7— food collection
- *PSR begins—Sunday, Sept. 9
- *All School Sing—Sun., Sept. 9, 11:00 Mass
- *Children's Mass—Thurs., Sept. 13—Gr. 3 leads
- *Board of Education Meeting - Thurs., Sept. 13, 6:00 in library
- *11:30 dismissal—Friday, Sept. 14—Faculty Retreat
- *St. Mary's Fiesta—Sept. 14-16!

Lunch Schedule

*Schedule in last week's newsletter was
incorrect! Our apologies!*

K—1	11:15 to 12:00
2—4	11:45 to 12:30
5—6	12:15 to 1:00



Student lunches are \$2.80

Extra milk is \$.30

If you plan to join your child for lunch, send a note or call before

9:00 a.m. so that a meal will be prepared for you. Cost of adult lunch is \$3.50. *Please do not combine lunch money with any other payments as it must go to a separate account.*

We could use:

16 oz containers (like cottage cheese, sour cream, dips)
Crayons, coloring books, puzzles for Before/After Care (used are fine!)



First day for our 4 Year Olds!

Attention Families with Students who serve Mass!

If your child is unable to serve at their assigned time, please have them get a sub! You should have a copy of the monthly server schedule and it's posted at www.st-maryschool.com.

Adults are needed as Eucharistic ministers & lectors.

Interested? Ministers will be trained after 11:00 Mass this Sunday.